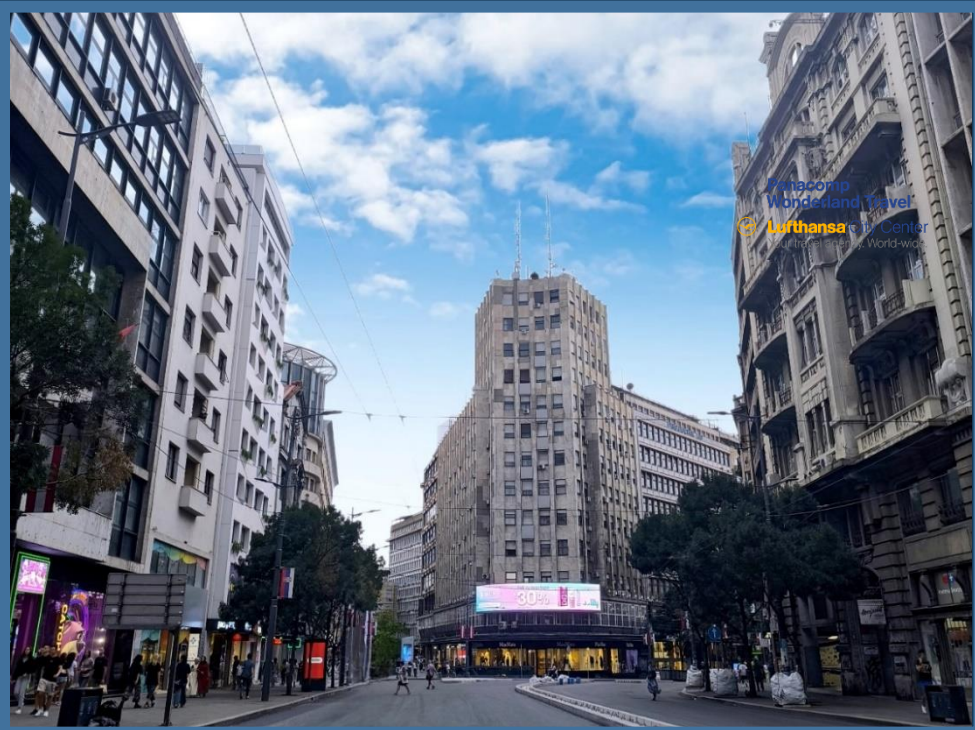


FIRST ANNOUNCEMENT



33rd Summer School and International Symposium on Physics of Ionized Gases

August 25–28, 2026, Belgrade, Serbia



You are cordially invited to participate in the 33rd Summer School and International Symposium on the Physics of Ionized Gases (**SPIG 2026**), taking place from **August 25 to 28, 2026**, at the Serbian Academy of Sciences and Arts in Belgrade, Serbia. The program will start on the morning of August 25, featuring associated workshops and a welcome cocktail. It will conclude on August 28, with a full-day program followed by a conference dinner. Additionally, the 33rd SPIG encompasses two workshops that are closely related to the conference topics: 3rd Workshop on Swarm Physics and Gaseous Dielectrics (SPGD) and 5th Workshop on X-ray and VUV Interaction with Biomolecules in Gas Phase (XiBiGP).

Scientific Programme

The Scientific Programme of the Conference will consist of Plenary Invited Lectures (45 min), Topical Invited Lectures (30 min), Progress Reports (20 min) and Poster Presentations. The Book of Abstracts will be published and will be available at the Conference. Submitted abstracts will be reviewed by the Scientific Committee. The official language is English.



Topics

Section 1.

ATOMIC COLLISION PROCESSES

- 1.1. Electron and Photon Interactions with Atomic Particles
- 1.2. Heavy Particle Collisions
- 1.3. Swarms and Transport Phenomena

Section 2.

PARTICLE AND LASER BEAM INTERACTION WITH SOLIDS

- 2.1. Atomic Collisions in Solids
- 2.2. Sputtering and Deposition
- 2.3. Laser and Plasma Interaction with Surfaces

Section 3.

LOW TEMPERATURE PLASMAS

- 3.1. Plasma Spectroscopy and Other Diagnostic Methods
- 3.2. Gas Discharges
- 3.3. Plasma Applications and Devices

Section 4.

GENERAL PLASMAS

- 4.1. Fusion Plasmas
- 4.2. Astrophysical Plasmas
- 4.3. Collective Phenomena

Important dates

Abstract submission — May 15, 2026

Early registration — June 30, 2026

Conference — August 25–28, 2026



www.spig2026.ipb.ac.rs

Registration

The conference fee for participants and accompanying persons is shown below. Participants are strongly encouraged to register as soon as possible, via the conference website, and to pay via bank transfer. The official technical organizer of the conference, PanaComp Agency, will send an email with details about the payment instructions. Exceptionally, the payment will be possible in cash at the registration desk.

Type	Before June 30, 2026	After
Regular	350 €	400 €
Students	250 €	300 €
Accompanying Persons	100 €	120 €
Only Workshop	100 €	120 €

Committees

Scientific

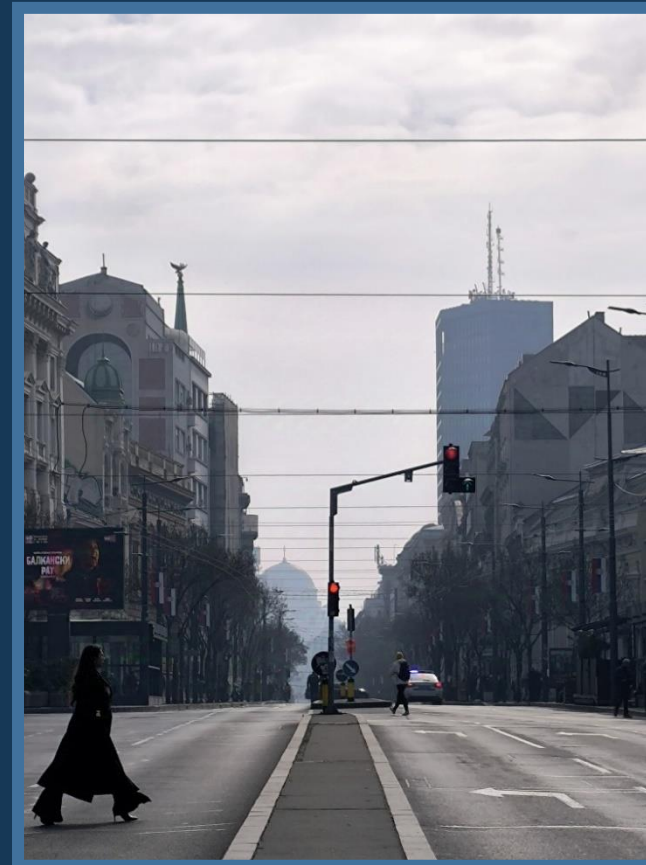
B. Obradović (Chair), Serbia
A. Antoniou, Greece
J. Burgdörfer, Austria
J. Cvetić, Serbia
M. Ćosić, Serbia
J. Kovačević-Dojčinović, Serbia
K. Kutasi, Hungary
M. Kuzmanović, Serbia
V. Lazić, Italy
D. Marić, Serbia
N. J. Mason, UK
N. Milojević, Serbia
A. Milosavljević, France
V. Milosavljević, Serbia
D. Milošević, BH

L. Nahon, France
G. Poparić, Serbia
I. Radović, Serbia
P. Ranitovic, Serbia
P. Rousseau, France
I. Savić, Serbia
Y. Serruys, France
T. Silva, Portugal
N. Simonović, Serbia
V. Srećković, Serbia
M. Škorić, Japan
S. Tošić, Serbia
M. Trtica, Serbia
R. White, Australia

Advisory

D. Belić	M.M. Kuraica
B. Bibić	J. Labat
M. S. Dimitrijević	G. Malović
S. Đurović	I. Mančev
N. Konjević	B. P. Marinković

M. Milosavljević
Z. Mišković
Z. Lj. Petrović
L. Č. Popović
B. Stanić



Organizing

S. Dujko (Co-chair)
D. Marić (Co-Chair)
J. Marjanović (Secretary)
Z. LJ. Petrović
S. Tošić
N. Cvetanović
D. Bošnjaković
I. Simonović

Organizers



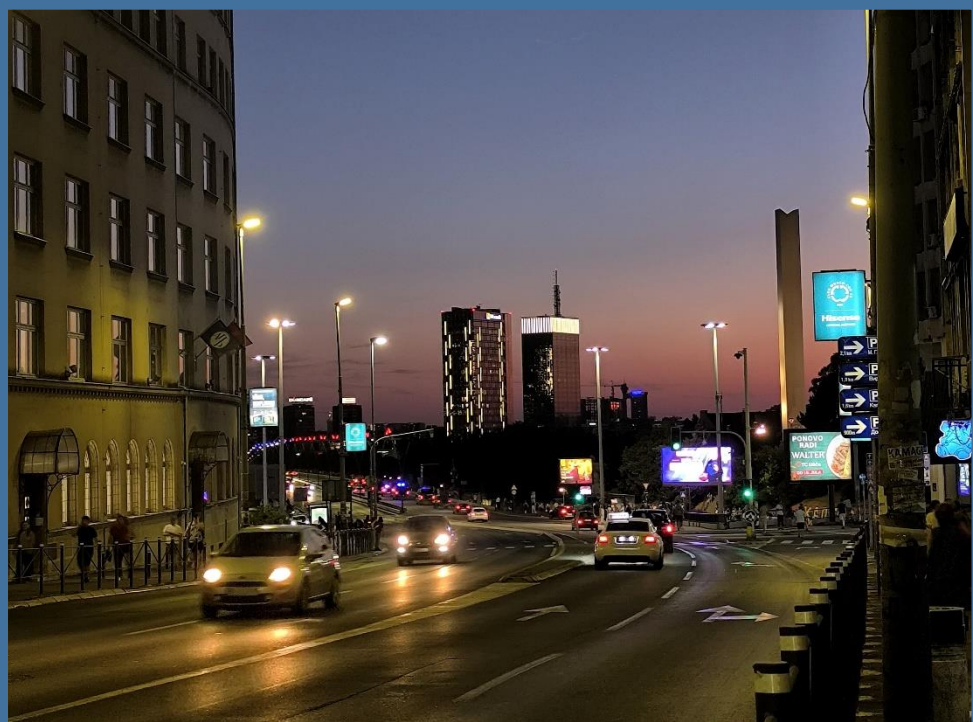
Institute of Physics Belgrade
University of Belgrade



Serbian Academy of
Sciences and Arts



Panacomp Wonderland Travel



Contact Information

E-mail: spig2026@ipb.ac.rs
spig2026@gmail.com

Web: www.spig2026.ipb.ac.rs

Institute of Physics
Pregrevica 118
11080 Zemun, Belgrade
Serbia

Technical Organizer

PanaComp Wonderland Travel
Bulevar Cara Lazara 96
21000 Novi Sad
Serbia

E-mail: mice@panacomp.net

Web: www.panacomp-kongresi.net

Venue

Serbian Academy of Sciences and Arts is the highest science and art institution in the Republic of Serbia. It is located on Knez Mihajlova Street, the main pedestrian zone in Belgrade and one of the city's oldest landmarks.



Travel Information

Belgrade is the capital and the largest city of Serbia and it is accessible by plane, train, bus, car or bicycle.

By plane: The Belgrade Airport is situated 18km west of Belgrade. All major international and several low-cost airlines have regular service to Belgrade.

By bus: International bus lines operate daily to all neighbouring countries and most European countries

By train: A well-developed rail network connects Belgrade to all parts of Europe, with daily and overnight services.

By car: Belgrade is located at the intersection of the European E-70 and E-75 highways.

By bicycle: Belgrade lies at the section of the Danube Bike Trail (DBT) through Serbia that bears the designation EuroVelo-Route 6